

Dell PH45W17-CA

Hybrid Adapter + Power Bank




USB-C

User's Guide

Regulatory model: PHA45W17-CA



Notes, Cautions, and Warnings

-  **NOTE:** A NOTE indicates important information that helps you make better use of your power hub.
-  **CAUTION:** A CAUTION indicates potential damage to hardware or loss of data if instructions are not followed.
-  **WARNING:** A WARNING indicates a potential for property damage, personal injury, or death.

Copyright © 2017 Dell Inc. All rights reserved. This product is protected by U.S. and international copyright and intellectual property laws.

Dell™ and the Dell logo are trademarks of Dell Inc. in the United States and/or other jurisdictions. All other marks and names mentioned herein may be trademarks of their respective companies.

Contents

About your power hub	5
Product features	5
What's in the box	6
Features	7
Power adapter	7
Power bank	7
Charging your power hub	8
Charging your device	9
Charging your laptop	9
Charging your mobile devices	10
Disconnecting the power adapter from your power hub	11
Alternative charging methods	12
Charging your laptop using the power adapter	12
Charging your laptop using the power bank	13
Charging your devices using the power hub	14
Cable management	15
Cable management on Power Bank	15
Cable management on Power Adapter	15

- Checking the battery 16**
 - Checking battery charge status 16
 - Checking battery health.17
 - Error status.17
- Attaching the Ferrite Core. 18**
- Troubleshooting 19**
 - Common symptoms 19
- Specifications 20**
 - General 20
 - Physical characteristics 20
 - Interfaces/Ports 20
 - Environmental. 20
- Statutory information. 21**
 - Warranty 21
 - Limited warranty and return policies 21
 - For U.S. customers: 21
 - For European, Middle Eastern and African customers: 21
 - For non-U.S. customers: 22

About your power hub

Product features

The features of the Dell Power Hub PHA45W17-CA include:

Portability

You could use your power hub to charge your Dell laptop or mobile devices while on-the-go.

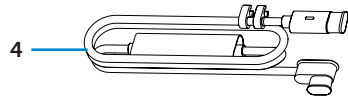
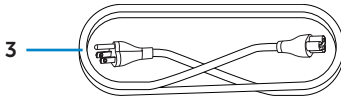
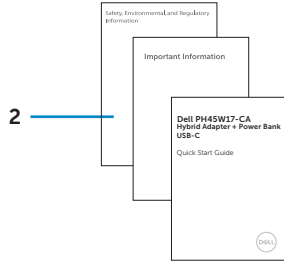
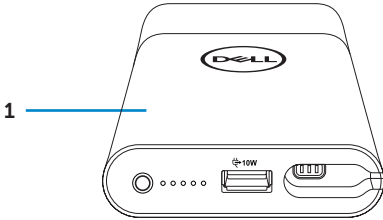
Compliance

Suitable for devices compliant with USB battery charging specification, Revision 1.2 (BC1.2).

Compact design

Small in size and ideal to be placed in pockets/bags.

What's in the box

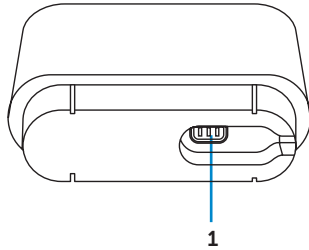


- 1 Power hub
- 3 Power cord
- 5 Ferrite core

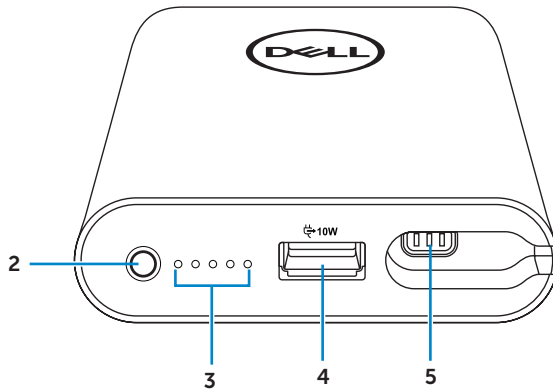
- 2 Documents
- 4 Power-out cable

Features

Power adapter



Power bank



- | | | | |
|---|--------------------------------|---|------------------------------------|
| 1 | Power-out port (to power bank) | 2 | Power button/Battery-status button |
| 3 | Battery-status lights (5) | 4 | USB-out port |
| 5 | Power-out port (to laptop) | | |

Charging your power hub

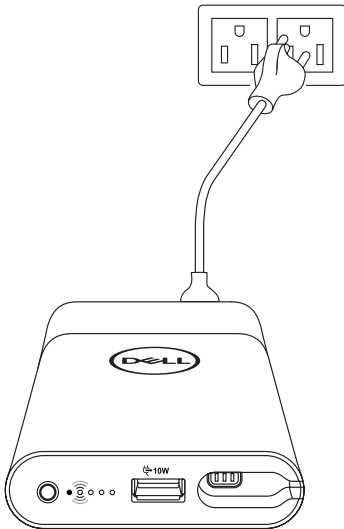
⚠ WARNING: To avoid injury and damaging your device, only use the power adapter shipped with your power bank.

Before first use, charge the power hub using the power cord.

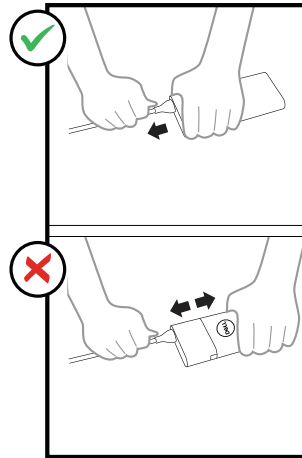
✍ NOTE: It takes approximately 3 hours to fully charge the power hub.

✍ NOTE: You can charge your devices through the power hub while the power hub is getting charged.

✍ NOTE: The power adapter is shipped with the power bank.



Holding onto Adapter while removing Power Supply Cable



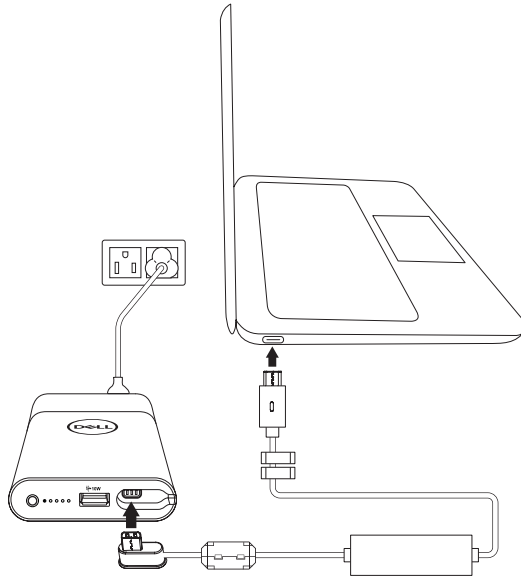
1. Ensure the power adapter is fully attached to your power bank.
2. Connect the power adapter to an electrical outlet.
 - The battery-status light turns on (flashing white) indicating the battery is getting charged. Refer to **“Checking battery charge status”** section for details.
 - The battery-status lights turn off when the battery is fully charged or when the power adapter is disconnected.

✍ NOTE: If the amber battery-status light lights up and flashes while the battery is charging, this indicates a charging error. Check if you have firmly attached the power adapter with power bank.

✍ NOTE: For more information on battery-status lights, see **“Checking battery charge status”**.

Charging your device

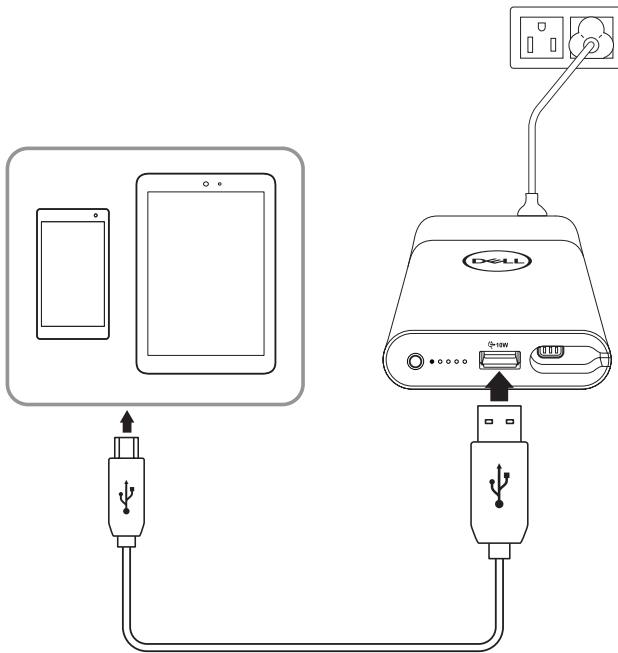
Charging your laptop



1. Connect the power adapter to an electrical outlet.
2. Connect one end of the power-out cable to the power-out port on the power hub.
3. Connect the other end of the power-out cable to the power-adaptor port on your laptop.

Charging your mobile devices

Using the power hub, you can charge up to two portable devices simultaneously.



1. Connect the power adapter to an electrical outlet.
2. Connect one end of the USB cable to the USB port on the power hub.
3. Connect the other end of the USB cable to the charging port on your mobile device.

 **NOTE:** The USB cable is not shipped with the power hub.

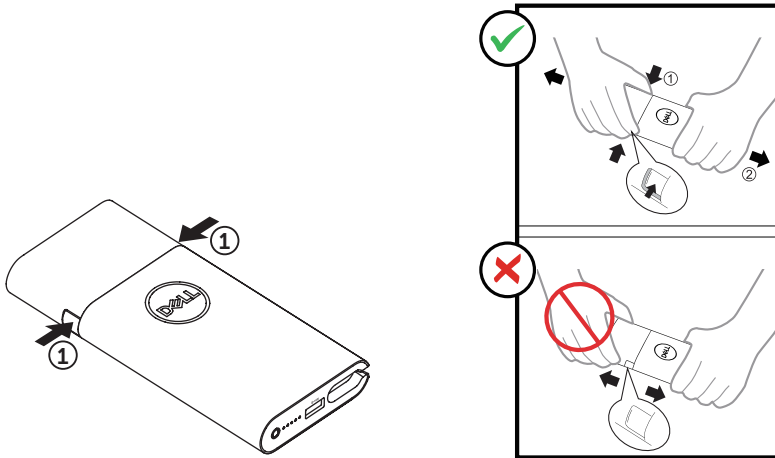
Disconnecting the power adapter from your power hub

The power bank and power adapter of your power hub can work independently to charge your device.

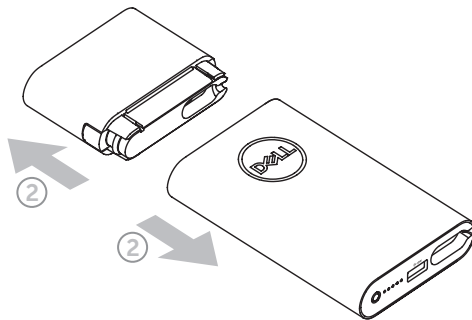
To disconnect the power adapter from your power hub, perform the following:

1. Press firmly both latches on the power adapter.

Power Adapter Pressing before Adapter Removal



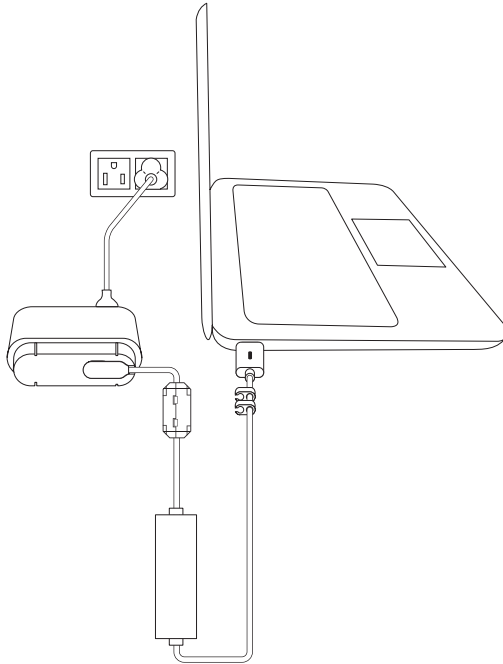
2. While holding onto the latches, pull the power adapter away from the power bank. The power bank and power adapter are now ready to be used separately.



Alternative charging methods

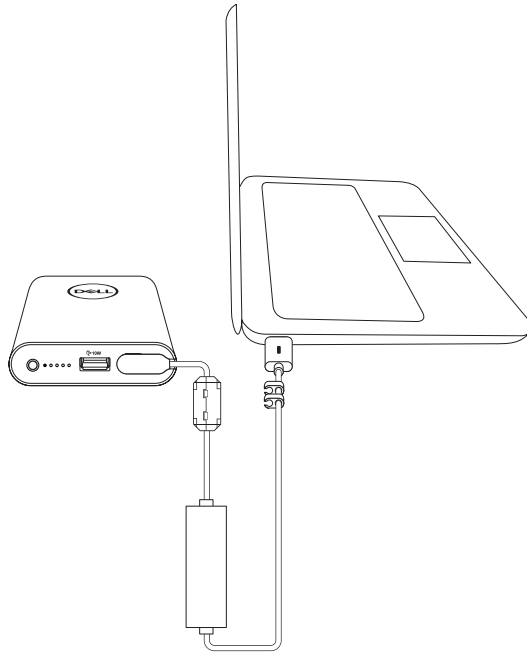
You can also charge your device either using the power bank or power adapter independently. Using the power hub, you can charge up to two devices simultaneously.

Charging your laptop using the power adapter

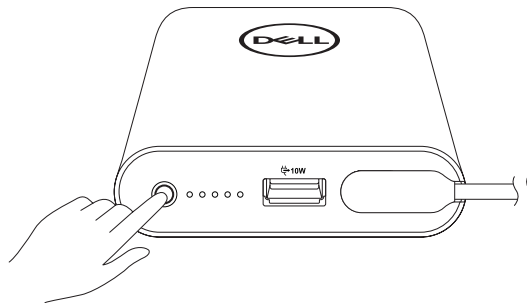


1. Connect the power adapter to an electrical outlet.
2. Connect one end of the power-out cable to the power-out port on the power adapter.
3. Connect the other end of the power-out cable to the power-adaptor port on your laptop.

Charging your laptop using the power bank

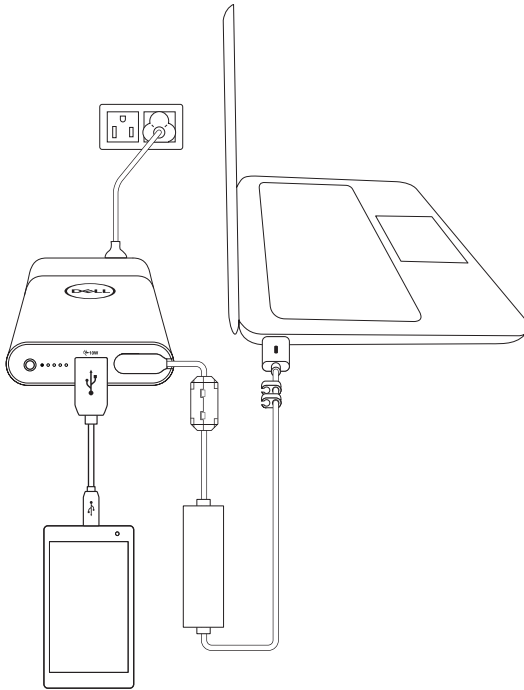


1. Connect one end of the power-out cable to the power-out port on the power bank.
2. Connect the other end of the power-out cable to the power-adaptor port on your laptop.
3. Press the power button to start charging your laptop.



NOTE: The battery-status light lights up amber when the power bank battery is low.

Charging your devices using the power hub



1. Connect the power adapter to an electrical outlet.
2. Connect one end of the power-out cable to the power-out port on the power hub.
3. Connect the other end of the power-out cable to the power-adaptor port on your laptop.
4. Connect one end of the USB cable to the USB port on the power hub.
5. Connect the other end of the USB cable to the charging port on your mobile device.

Cable management

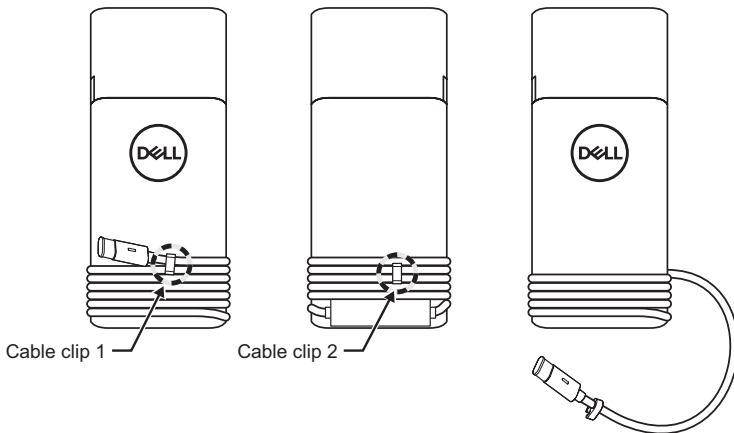
The power hub has two cable clips:

- Cable clip 1 is adjacent on the plug.
- Cable clip 2 is 300mm apart.

When cable is routed on the body, the USB cable (USB Type-C capsule) will stay within the power adapter and power bank body.

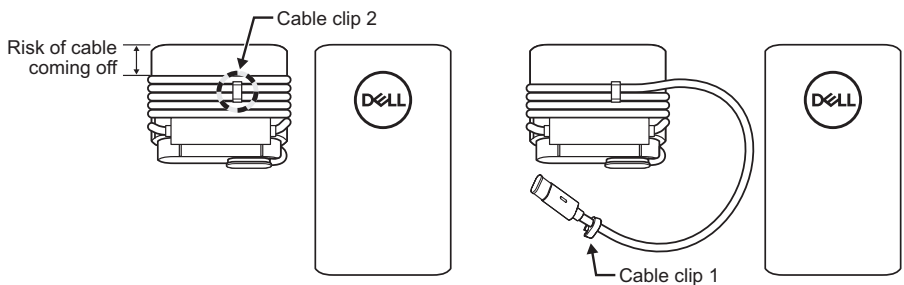
Cable management on Power Bank

By uncoupling cable clip 1, users have a cleaner on-desk charging solution by using only a fraction of the cable. The rest of the cable and USB-C capsule are held by the cable clip 2.



Cable management on Power Adapter

Since the power adapter has a smaller body, the cable clip 2 will hold the cable and USB-C capsule in cases that the cable is detached accidentally.

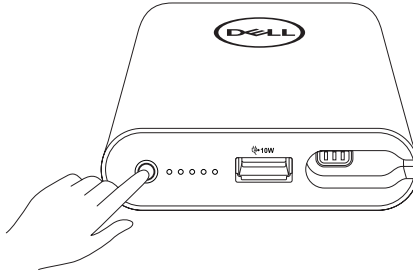


Checking the battery

Checking battery charge status

You can check the battery-charge status by pressing the power button. The battery-status lights turn on indicating the battery-charge status of the power hub.

NOTE: The battery-status lights remain illuminated for 5 seconds after you release the power button.



Battery-status light	LED color & behavior	Battery capacity status
All 5 battery-status lights are off ● ● ● ● ●	Off	100%
All 5 battery-status lights are on ○ ○ ○ ○ ○	White (solid)	81% – 99%
1 st -4 th battery-status lights are on ○ ○ ○ ○ ●	White (solid)	61% – 80%
1 st -3 rd battery-status lights are on ○ ○ ○ ● ●	White (solid)	41% – 60%
1 st -2 nd battery-status lights are on ○ ○ ● ● ●	White (solid)	21% – 40%
1 st battery-status light is on ○ ● ● ● ●	White (solid)	11% – 20%
1 st battery-status light is on ● ● ● ● ●	Amber (solid)	1-10% (battery low state)

NOTE: All five battery-status lights turn off when the battery is fully charged.

Checking battery health

Battery health is a measurement reflecting the general condition of the battery. It indicates how much battery life remains before the power hub must be replaced.

 **NOTE:** The units of SOH (State Of Health) are percentage (%) points.

A battery's SOH is 100% at the time of manufacture and will deteriorate gradually with usage.

Press and hold the power button for 5 seconds to turn on the power hub and check the battery health status.

Battery-status light	Battery health status
5 th battery-status light is on ● ● ● ● ○	81% – 100%
4 th & 5 th battery-status lights are on ● ● ● ○ ○	61% – 80%
3 rd ~5 th battery-status lights are on ● ● ○ ○ ○	41% – 60%
2 nd ~5 th battery-status lights are on ● ○ ○ ○ ○	21% – 40%
All 5 battery-status lights are on ○ ○ ○ ○ ○	1% – 20%

Error status

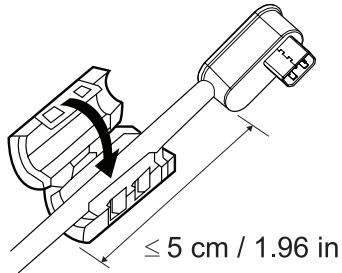
The type of error condition table is shown below.

Event	Battery-status light color & behavior	Status
All modes	One second flash ON/OFF interchangably on the 1 st battery-status light (amber) and 2 nd battery-status light (white)	Over temperature
PSID Fail or Daisy Chain	Flashing amber	Error caused by improper connection or damage of power adapter.

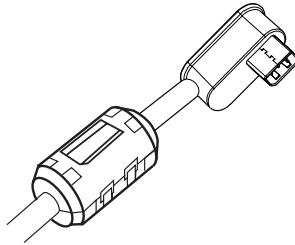
Attaching the Ferrite Core

In order to reduce electromagnetic interference, attach the supplied ferrite core on the power-output cable connected to your laptop.

1. Open the two halves of the ferrite core.
2. Clamp the core around the power-output cable as shown in the illustration.



3. Fold over the ferrite core, snapping the small latches back together.



Troubleshooting

Common symptoms

The following table contains information about common issues you might encounter and the possible solutions.

Common symptoms	Possible solutions
The power hub gets unusually hot when placed inside the pocket/bag.	<ul style="list-style-type: none">• Unplug the power output cable immediately.• Take the power hub out of your pocket/bag immediately. Then let it cool down.
The power hub battery power gets drained too fast.	When connecting to a mobile device, close applications you are not using or set the device to airplane mode.
The battery-status light does not turn on.	<ul style="list-style-type: none">• Check if the power hub is out of battery power. Charge the power hub.• If the problem persists, contact Dell or your dealer for technical assistance.

Specifications

General

Model number	PHA45W17-CA (4-cell, 43Wh)
Supported output	19.5 V; 2.3 A 5 V, 1.5 A
USB output	5 V, up to 2.1 A
LED	5 battery-status lights

Physical characteristics

Weight	425g (0.93lb)
Dimension (L x W x H)	173 x 78 x 22.5 mm (6.81 x 3.07 x 0.88in)
Cord length	914 mm (35.98in) (Power cord) 1250 mm (49.21in) (Power-out cable)

Interfaces/Ports

Input	One Power-in port (male)
Output	One Dell proprietary connector (female) One USB port (battery charging 1.2 compliant)

Environmental

Temperature	Operating: 0°C to 40°C (32°F to 104°F) Storage: -20°C to 60°C (-4°F to 140°F)
Humidity	90% maximum relative humidity; non-condensing

Statutory information

Warranty

Limited warranty and return policies

Dell-branded products carry a 1-year limited hardware warranty.

WARNING

IMPORTANT SAFETY INSTRUCTIONS

INSTRUCTIONS PERTAINING TO RISK OF FIRE OR INJURY TO PERSONS

- Do not expose to moisture or hot climates for extended periods or time.
- Do not operate in an enclosed environment (e.g. bag or area with poor ventilation).
- Do not disassemble, puncture, drop or submerge in liquids.
- If bulging or bubbling develops, discontinue use immediately.
- Not for children under 3 years old.

FOLLOW AND SAVE THE INSTRUCTIONS!

For U.S. customers:

This purchase and your use of this product are subject to Dell's end user agreement, which you can find at <http://www.dell.com/terms>. This document contains a binding arbitration clause.

For European, Middle Eastern and African customers:

Dell-branded products that are sold and used are subject to applicable national consumer legal rights, the terms of any retailer sale agreement that you have entered into (which will apply between you and the retailer) and Dell's end user contract terms.

Dell may also provide an additional hardware warranty – full details of the Dell end user contract and warranty terms can be found by going to <http://www.dell.com>, selecting your country from the list at the bottom of the "home" page and then clicking the "terms and conditions" link for the end user terms or the "support" link for the warranty terms.

For non-U.S. customers:

Dell-branded products that are sold and used are subject to applicable national consumer legal rights, the terms of any retailer sale agreement that you have entered into (which will apply between you and the retailer) and Dell's warranty terms. Dell may also provide an additional hardware warranty – full details of Dell's warranty terms can be found by going to <http://www.dell.com>, selecting your country from the list at the bottom of the "home" page and then clicking the "terms and conditions" link or the "support" link for the warranty terms.